



# CONFERENCES AND CELEBRATIONS



BAYERISCHER HOF



# THE LOCATION: INCOMPARABLE. YOUR EVENT: UNFORGETTABLE.

WELCOME. For over 170 years, the Bayerischer Hof has been valued by its guests as a leading world-class luxury hotel. Ideally situated in the Old Town district of Munich, it is in direct proximity to the most important sights and exclusive boutiques. Which venue would be more suitable to provide an appropriate setting for your private or corporate event?

Choose from any of our 40 fully air-conditioned function rooms for 10 up to 2,500 guests, equipped with state-of-the-art conference technology. You will find the right surroundings for every occasion: from the impressive ballroom ensemble to the classical rooms in the historical Palais Montgela, to the Dachgarten, our roof garden, with its magnificent view of the towers of the Frauenkirche. Our very own

in-house cinema with digital state of the art image and sound control offers various options for your event. In addition, the hotel's five restaurants and six bars are available if required.

Our team of conference and banqueting specialists is always at hand to help you plan your event, offering individual suggestions and ideas. They will make sure that creating a successful event at the Bayerischer Hof will be an experience, as enjoyable as the event itself.

In this brochure we have compiled an overview of our function rooms for you. For more detailed information, please contact our banqueting team or visit our website at [www.bayerischerhof.de](http://www.bayerischerhof.de).



## THE BALLROOM

Whether it's a grand ball, a festive banquet, an international congress or a successful conference, this is where society meets. The light-flooded Ballroom appears in Art deco style. Curved staircases, stately galleries and the

terrific stage fit in the overall picture. Enjoy the skies over Munich. In the middle of our Ballroom. The unique glass roof construction can be opened in minutes to transform your event into a spectacular open air sensation.

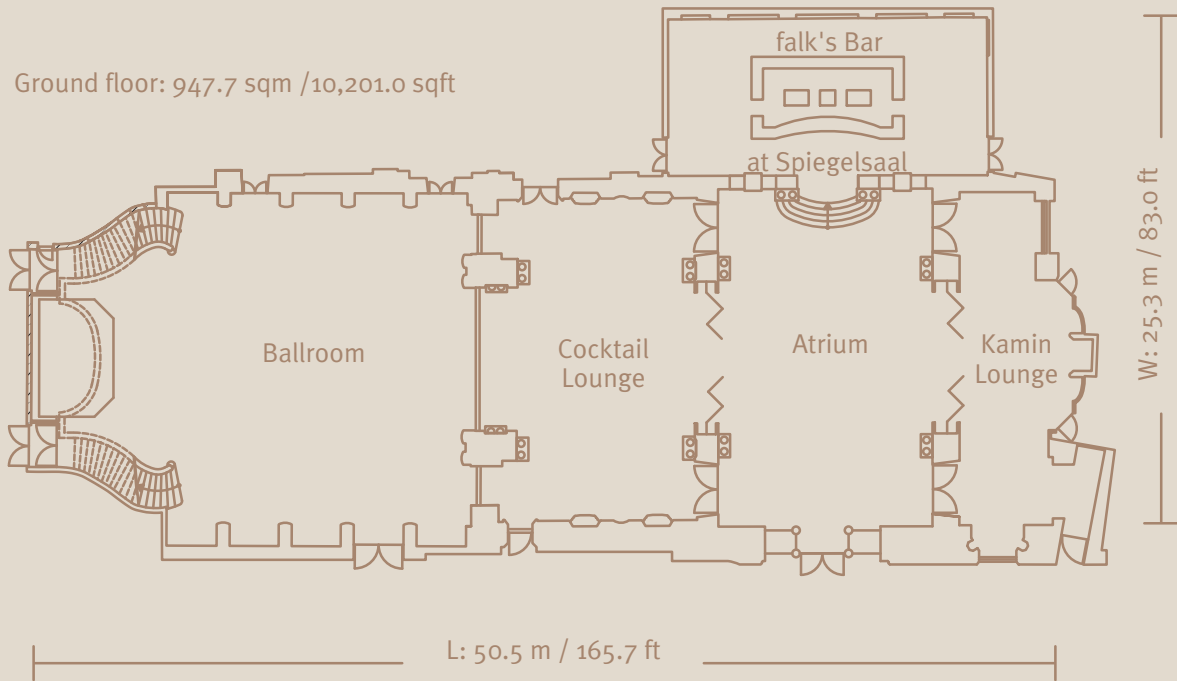
## THE BALLROOM ENSEMBLE

All together, the adjoining rooms assemble to a spacious and spectacular hall: the Ballroom Ensemble. The Cocktail Lounge appeals with its elegant charm. In the Atrium – the centrepiece of the hotel – a glass dome rises 8.5 metres

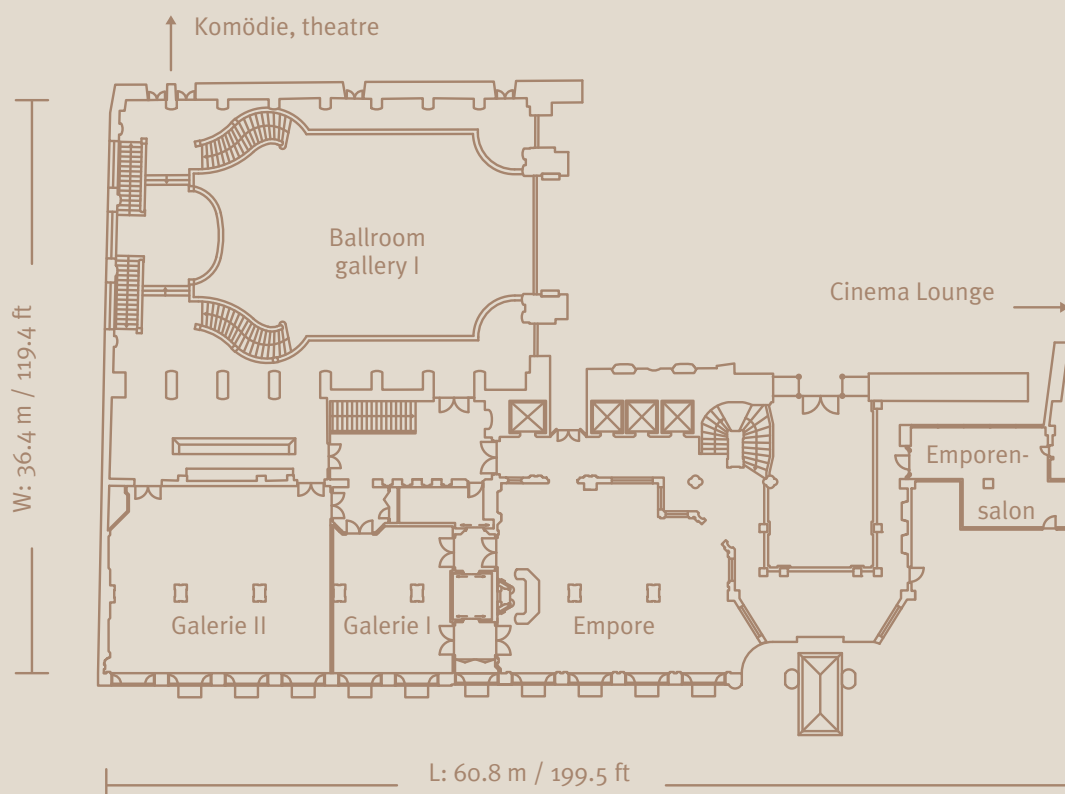
above the floor. The 3.5 metre high fireplace is the eye-catcher of the Kamin Lounge. One of the most modern bars in town can be found in the historically protected mirrored hall from the year 1839 – the falk's Bar.

## Technical details of the ballroom

- Height 8.6 metres
- Glass roof 10.5 x 8.5 metres, can be opened on both sides in 2 minutes
- 16 suspension points for a total of max. two tons weight
- Can be completely darkened
- Focussed lighting by means of 36 moving lights in all colours
- 24 video beamers project running films and pictures onto the hall walls on request
- Optimal acoustics thanks to Bose loud speaker system
- 2 galleries with connection to further function rooms
- Hoist gates extend the ballroom to a Ballroom Ensemble with around 1,700 sqm / 18,298.6 sqft
- Flexible stage (height up to 1m, size up to 70 sqm / 753.5 sqft)

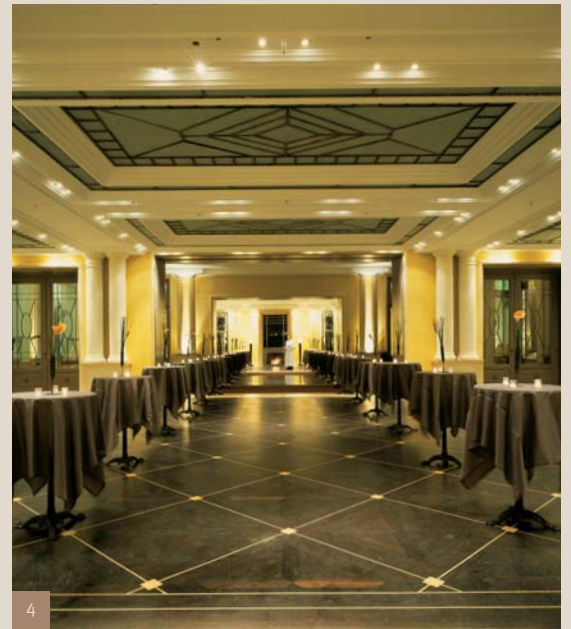


## Mezzanine





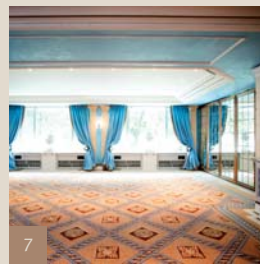
9



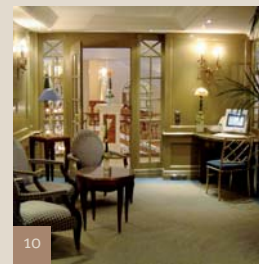
4



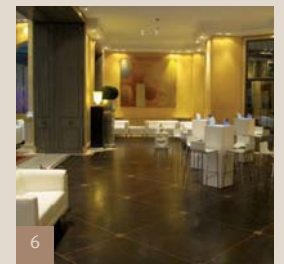
11



7



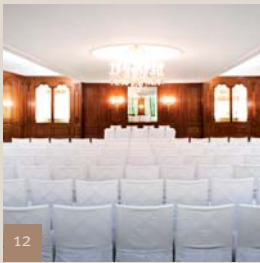
10



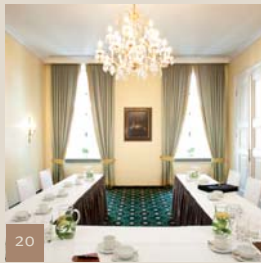
6

Ballroom Ensemble												
	Rooms	L x W x H in m	Size in sqm	Size in sqft	Daylight	Boardroom	U-shape	Cabaret	Classroom style	Banquet	Theater style	Reception
1	Ballroom gr.floor	21.4 x 16.5 x 8.6	353.1	3,800.7	yes	50/100	80	160	230	270	500	850*
2	Ballroom gallery I	-	185.0	1,991.3	yes	-	-	-	-	205	110	-
3	Ballroom gallery II	-	140.6	1,513.4	yes	-	-	-	-	98	100	-
4	Cocktail Lounge	16.9 x 10.1 x 3.9	170.7	1,837.4	no	40	44	72	80	150	160	200
	Ballroom complete**	-	678.7	7,305.5	yes	-	-	-	310	720	870	1,050
5	Atrium	17.7 x 11.6 x 5.4	191.3	2,059.1	yes	40	44	80	100	120	222	300
6	Kamin Lounge	5.4 x 17.5 x 4.0	106.1	1,142.1	no	20	-	32	****	80	****	100
7	Galerie I	9.1 x 7.2 x 2.4	65.5	705.0	yes	16	16	24	24	40	40	60
8	Galerie II	14.0 x 11.3 x 2.4	158.2	1,702.9	yes	30	36	100	80	130	180	180
9	falk's Bar at Spiegelsaal	16.1 x 7.6 x 4.6	126.5	1,361.6	yes	-	-	-	-	-	-	120
	Ballroom Ensemble complete***	-	1,693.5	18,228.7	yes	-	-	468	644	1,040	1,490	2,030
10	Emporensalon	7.7 x 6.3 x 2.4	44.7	481.1	no	10	-	-	-	-	-	-
11	Komödie (theatre)	-	311.2	3,349.7	no	-	-	-	-	-	560	560

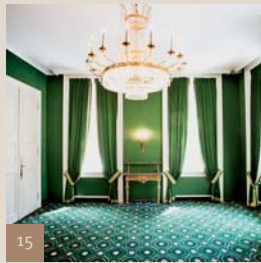
\* 1+2+3 \*\* 1+2+3+4 \*\*\* 1+2+3+4+5+6+7+8+9 \*\*\*\* in combination with Atrium



12



20



15

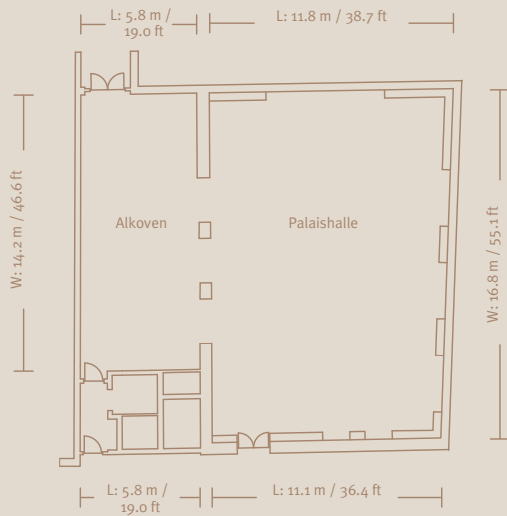


13

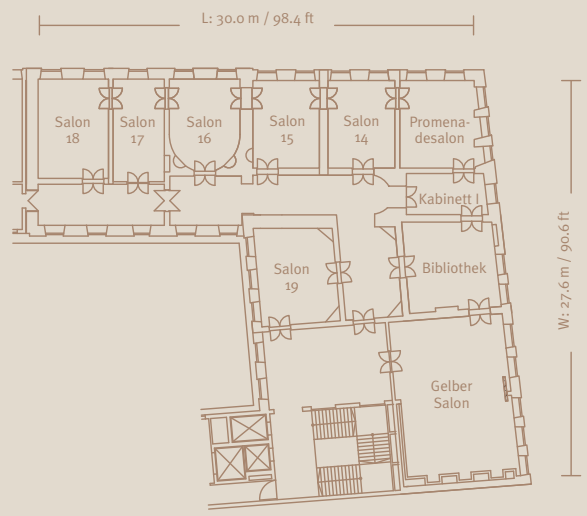


14

Palais Montgelas, ground floor: 289.9 sqm / 3,120.5 sqft

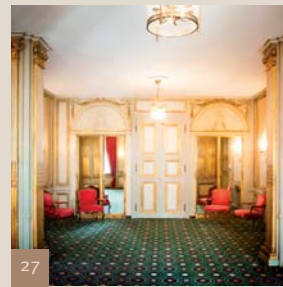
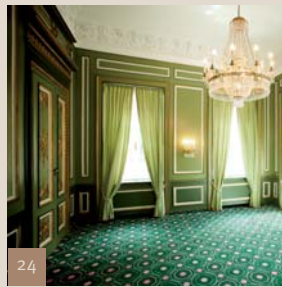
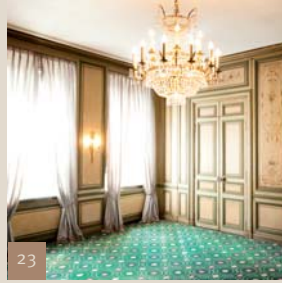
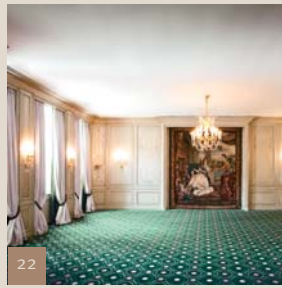


Palais Montgelas, 1st floor: 448.6 sqm / 4,828.7 sqft

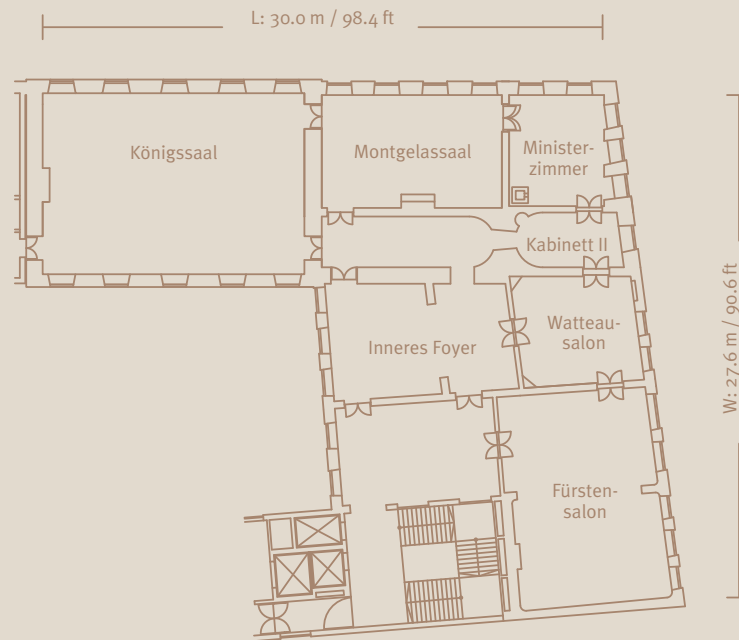


Palais Montgelas, ground floor and 1st floor

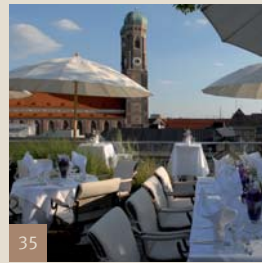
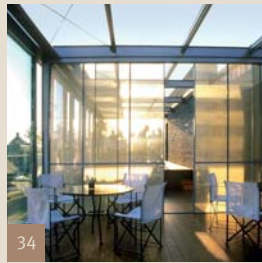
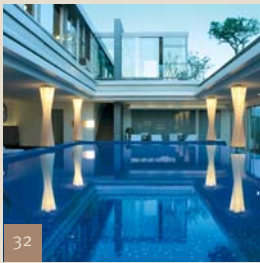
Rooms	L x W x H in m	Size in sqm	Size in sqft	Daylight	Boardroom	U-shape	Cabaret	Classroom style	Banquet	Theater style	Reception
12 Palaishalle	17.6 x 16.8 x 3.2	289.9	3,120.5	no	50	60	96	112	–	220	200
13 Gelber Salon	11.2 x 8.3 x 3.6	85.8	923.5	yes	30	28	40	50	60	70	80
14 Bibliothek	6.4 x 5.8 x 3.6	35.7	384.3	yes	16	–	14	–	20	20	25
15 Promenadesalon	6.1 x 5.3 x 3.6	32.8	353.1	yes	16	–	14	–	20	20	25
16 Salon 14	6.1 x 4.7 x 3.5	28.4	305.7	yes	10	–	–	–	–	10	–
17 Salon 15	6.1 x 4.7 x 3.5	28.4	305.7	yes	10	–	–	–	–	10	–
18 Salon 16	6.4 x 4.9 x 3.5	28.8	310.0	yes	10	–	–	–	–	10	–
19 Salon 17	7.2 x 3.6 x 3.5	25.8	277.7	yes	10	–	–	–	–	10	–
20 Salon 18	7.0 x 4.9 x 3.5	34.3	369.2	yes	16	–	–	–	–	20	–
21 Salon 19	6.5 x 4.5 x 3.5	33.9	364.9	yes	16	–	–	–	20	20	25



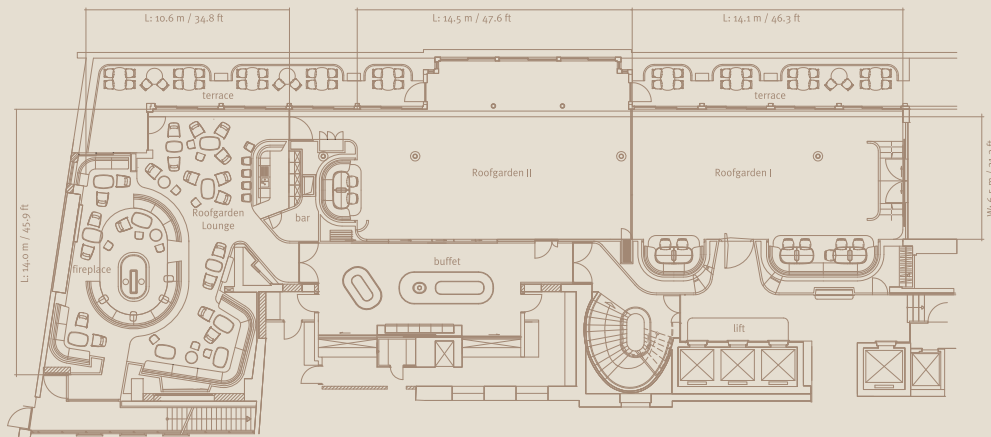
Palais Montgelas, 2nd floor: 514.5 sqm / 5,538.0 sqft



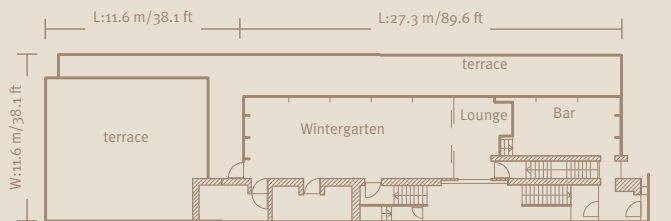
Palais Montgelas, 2nd floor												
Rooms	L x W x H in m	Size in sqm	Size in sqft	Daylight	Boardroom	U-shape	Cabaret	Classroom style	Banquet	Theater style	Reception	
22	Fürstensalon	11.8 x 8.4 x 3.5	95.5	1,028.0	yes	34	32	50	60	70	80	90
23	Watteausalon	5.9 x 5.8 x 3.4	36.6	394.0	yes	16	-	14	-	20	20	25
24	Ministerzimmer	6.2 x 5.3 x 4.8	31.8	342.3	yes	16	-	14	-	20	20	25
25	Montgelassaal	9.9 x 6.0 x 4.7	59.6	641.5	yes	26	24	30	36	40	40	50
26	Königssaal	14.3 x 9.9 x 6.0	154.6	1,664.1	yes	40	42	70	100	130	180	200
27	Inneres Foyer	9.2 x 6.2 x 3.4	55.2	594.2	yes	-	-	-	-	-	-	80



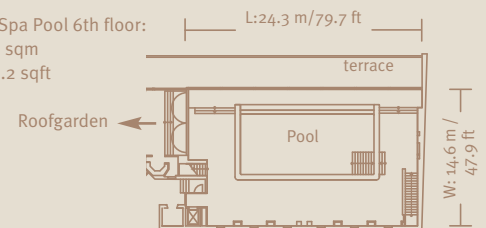
Roofgarden 6th floor:  
366 sqm  
3,939.5 sqft



Blue Spa 7th floor:  
316.2 sqm  
3,403.5 sqft



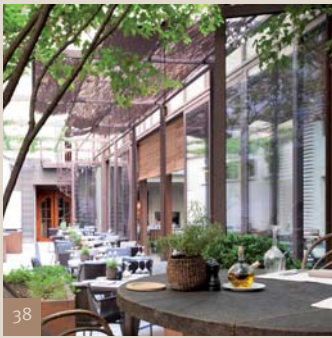
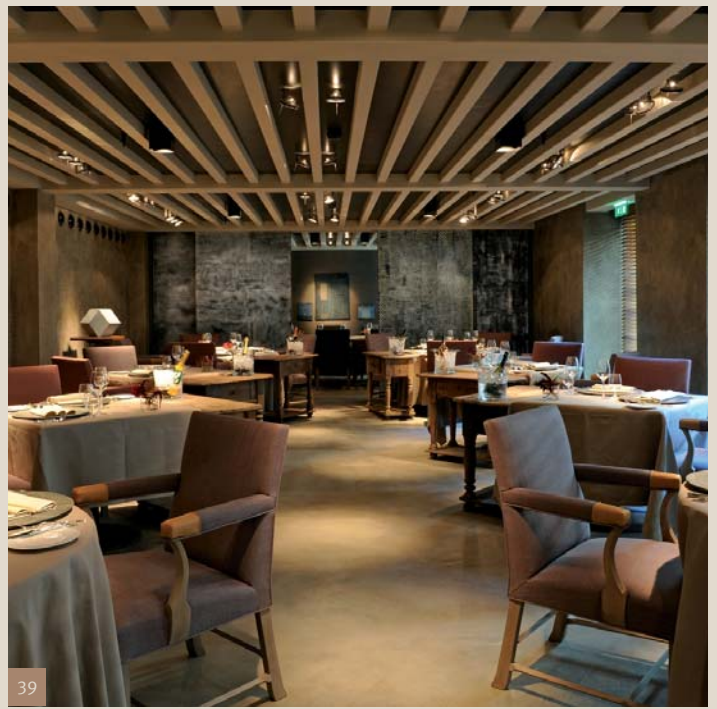
Blue Spa Pool 6th floor:  
203.1 sqm  
2,186.2 sqft



Roofgarden / Blue Spa												
Rooms	L x W x H in m	Size in sqm	Size in sqft	Daylight	Boardroom	U-shape	Cabaret	Classroom style	Banquet	Theater style	Reception	
28	Roofgarden I	14.1 x 6.5 x 3.1	112	1,205.6	yes	30	-	-	45	80	72	80
29	Roofgarden II	14.5 x 6.5 x 3.1	136	1,463.9	yes	34	-	-	59	110	104	180
30	Roofgarden I and II	28.6 x 6.5 x 3.1	248	2,669.4	yes	72	-	-	80	190	192	260
31	Roofgarden Lounge	10.6 x 14.0 x 3.1	118	1,270.1	yes	-	-	-	-	-	-	80
32	Blue Spa Pool	24.3 x 14.2 x 2.8	203.1	2,186.2	yes	-	-	-	-	80	-	140/200*
33	Blue Spa Bar & Lounge	11.8 x 3.8 x 2.6	45.2	486.5	yes	-	-	-	-	-	-	20/40*
34	Blue Spa Wintergarten	15.1 x 5.8 x 3.1	84.6	910.6	yes	26	30	-	-	50	50	90
35	Blue Spa terrace complete	40.9 x 14.7	275.2	2,962.2	yes	-	-	-	-	70	-	-
	Blue Spa complete***	-	608.1	6,545.5	yes	-	-	-	-	-	-	500*

\* including terrace \*\* 32+33+34+terrace





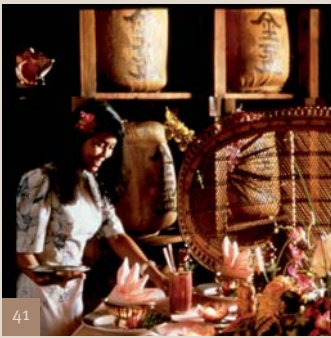
Restaurants: Garden / Atelier												
Rooms	L x W x H in m	Size in sqm	Size in sqft	Daylight	Boardroom	U-shape	Cabaret	Classroom style	Banquet	Theater style	Reception	
36	Garden Restaurant	21.4 x 5.6 x 4.3	119.8	1,289.5	yes	30	-	-	-	50	-	-
37	Garden Salon	9.0 x 4.8 x 2.4	43.2	465.0	indirect	24	-	-	-	24	-	-
38	Garden Terrasse	26.2 x 4.7	123.1	1,325.0	yes	-	-	-	-	30	-	-
39	Atelier Restaurant	12.3 x 5.7 x 2.5	70.1	754.6	indirect	18	-	-	-	30	-	-
40	Atelier Privé	5.4 x 4.1 x 2.5	22.1	237.9	yes	10	-	-	-	10	-	-



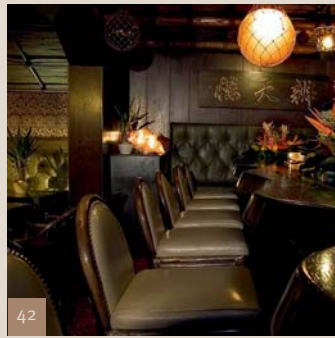
41



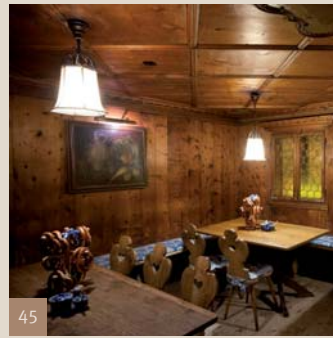
44



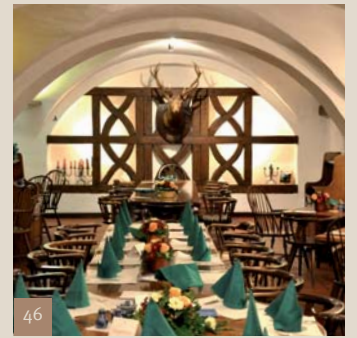
41



42

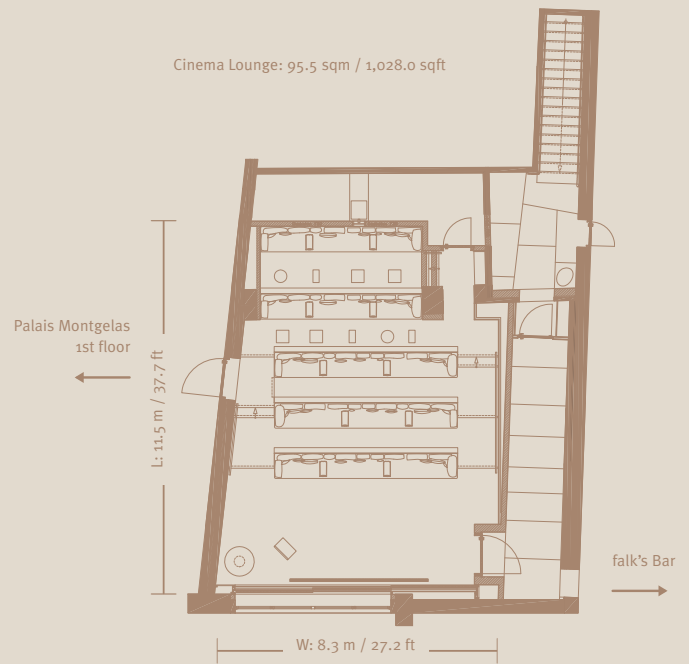
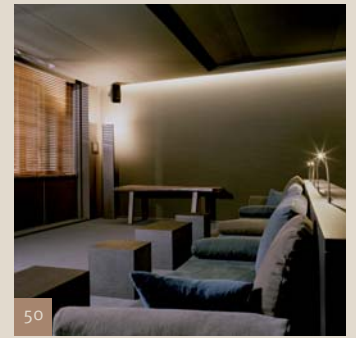
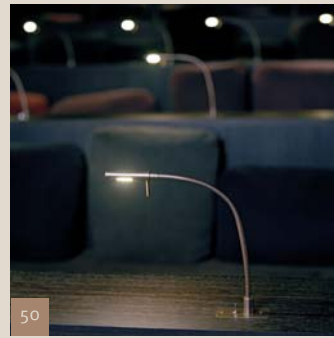


45



46

Restaurants: Trader Vic's / Palais Keller												
Rooms	L x W x H in m	Size in sqm	Size in sqft	Daylight	Boardroom	U-shape	Cabaret	Classroom style	Banquet	Theater style	Reception	
41	Trader Vic's	43.4 x 23.9 x 2.9	623.5	6,711.3	no	-	-	-	256	-	-	
42	Menehune Bar	7.5 x 3.5 x 2.5	27.5	296.0	no	-	-	-	18	-	-	
43	Palais Keller Gewölbe	29.7 x 9.2 x 2.9	268.0	2,884.7	no	-	-	-	140	-	-	
44	Palaisstube	13.4 x 9.6 x 2.7	128.6	1,384.2	no	-	-	-	100	-	150	
45	Tiroler Stube	4.9 x 3.8 x 2.2	18.6	200.2	no	-	-	-	20	-	-	
46	Refektorium	15.9 x 6.5 x 2.9	103.4	1,113.0	no	-	-	-	70	-	90	
47	Trinkstüberl	6.1 x 4.8 x 2.6	29.3	315.4	no	-	-	-	28	-	-	



Night Club / Cinema Lounge												
Rooms	L x W x H in m	Size in sqm	Size in sqft	Daylight	Boardroom	U-shape	Cabaret	Classroom style	Banquet	Theater style	Reception	
48 Night Club*	17.2 x 14.9 x 3.2	304.0	3,272.2	no	–	–	–	–	250**	–	–	
49 Piano Bar	12.5 x 4.9 x 2.4	61.3	659.8	no	–	–	–	–	42**	–	50	
50 Cinema Lounge	11.5 x 8.3 x 2.8	95.5	1,028.0	yes	–	–	–	–	–	38	–	

\* inclusive Piano Bar \*\* standard seating

# THE BAYERISCHE HOF AT A GLANCE.

First opened:	1841
Rooms and suites:	340 rooms, including 65 suites
Multimedia:	High-speed Internet access via WLAN/LAN, Multimedia TV with more than 380 international channels, Pay TV
Conference rooms:	40, sizes: 17 to 1,700 sqm / 18,298.6 sqft, capacities: 10 to 2,500 persons
Restaurants:	Atelier with Privé and Silent Garden, Blue Spa Lounge with winter garden and terrace, Garden with Garden Salon and summer terrace, Palais Keller, Trader Vic's
Bars:	falk's Bar, Menehune Bar, Trader Vic's Bar, Night Club Bar, Piano Bar, Blue Spa Bar
Entertainment:	astor@Cinema Lounge, theatre Komödie im Bayerischen Hof, Night Club, Piano Bar
Spa area:	1,300 sqm / 13,993 sqft spa area with pool (6.5 x 14.5 m), saunas, solarium, steam bath, sun decks, fitness studio, massage, beauty centre, hair salon
Service:	Business centre, concierge desk, gift voucher service, Reiseland travel agency, Sixt car rental
Parking:	24 h surveillance
Shops/boutiques:	Fashion: Bonpoint (kids), friendly hunting, Gabriele Griem, Woman Man, Wunderkind Jewellery: Giovanni Raspini, L'Atelier Parmigiani, Möller 1856 Galleries: Galerie Jeanne, Galerie Schüller, Photogalerie Stephen Hoffman Other: Antiquitäten Urban, Stancsics Schokoladen, Papeterie Gmund, Hotel Shop
Location:	Perfectly situated in the Old Town district of Munich, within direct proximity to the most important sights within walking distance (Frauenkirche, Viktualienmarkt, opera, museums, Residenz and Hofgar- ten), shopping opportunities with exclusive boutiques as well as the financial and business quarter.
Connections:	International Airport Franz Josef Strauss: 35 km (approx. 45 min.), Main train station: 1 km (approx. 5 min.), ICM International Congress Centre Munich and Munich Messe (convention centre): 8 km (approx. 15 min.), The Olympic Park Munich: 5 km (approx. 10 min.), Allianz Arena (football stadium): 10 km (approx. 20 min.)

## Other establishments run by the

Volkhardt family:	Hotel Zur Tenne Vorderstadt 8-10 6370 Kitzbühel, Austria Phone +43 5356.644 44 - 0 Fax +43 5356.64 80 - 356 www.hotelzurtenne.com info@hotelzurtenne.com	Volkhardts Wein und Bistro Kaflerstraße 15 81241 Munich, Germany Phone +49 89.829 212 - 0 Fax +49 89.829 212 - 26 www.volkhardts.de info@volkhardts.de
-------------------	--	--

## Hotel Bayerischer Hof

Promenadeplatz 2 - 6  
80333 Munich, Germany

Phone +49 89.21 20 - 0  
Fax +49 89.21 20 - 906

www.bayerischerhof.de  
info@bayerischerhof.de

